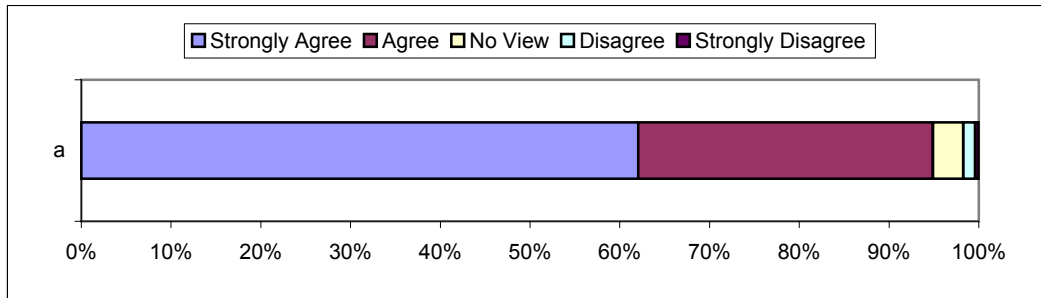


**Q1 The five market towns of Dereham, Thetford, Attleborough, Swaffham and Watton are likely to be the main location for employment development which will attract jobs into the area. The Council will consider a number of issues when deciding what type of sites are suitable for employment development?**

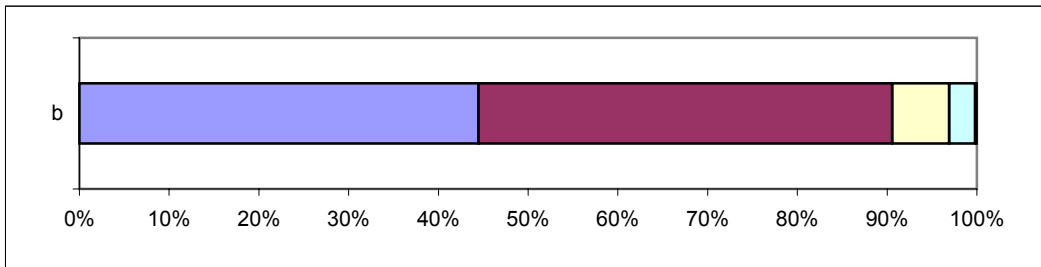
	Strongly Agree		Agree		No View		Disagree		Strongly Disagree		Total
	No.	%	No.	%	No.	%	No.	%	No.	%	
<b>a</b>	3171	62.0427	1679	32.8507	173	3.38486	68	1.33046	20	0.39131	5111
<b>b</b>	2281	44.4813	2365	46.1193	324	6.31825	148	2.88612	10	0.19501	5128
<b>c</b>	1156	22.64	2385	46.7098	825	16.1575	699	13.6898	41	0.80298	5106
<b>d</b>	1479	29.057	2265	44.499	827	16.2475	479	9.41061	40	0.78585	5090
<b>e</b>	1272	24.9902	2840	55.7957	674	13.2417	267	5.24558	37	0.72692	5090
<b>f</b>	1302	25.4894	2716	53.1715	508	9.94518	484	9.47533	98	1.91856	5108
<b>g</b>	1980	38.7172	2438	47.6731	395	7.7239	237	4.63434	64	1.25147	5114
<b>h</b>	901	17.6736	1787	35.053	1124	22.0479	1104	21.6556	182	3.57003	5098
<b>i</b>	1232	24.086	2551	49.8729	903	17.654	378	7.39003	51	0.99707	5115
<b>j</b>	3669	71.5763	1072	20.913	162	3.16036	152	2.96528	71	1.3851	5126
<b>k</b>											

**Q1 The five market towns of Dereham, Thetford, Attleborough, Swaffham and Watton are likely to be the main location for employment development which will attract jobs into the area. The Council will consider a number of issues when deciding what type of sites are suitable for employment development?**

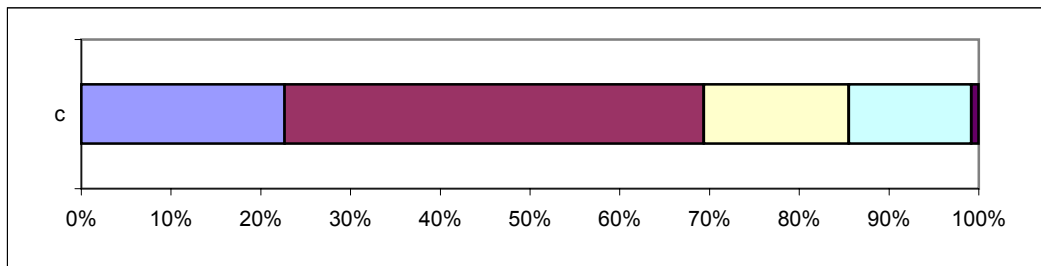
a Developments should be considered more favourably if they make use of a current brownfield site (previously developed land)



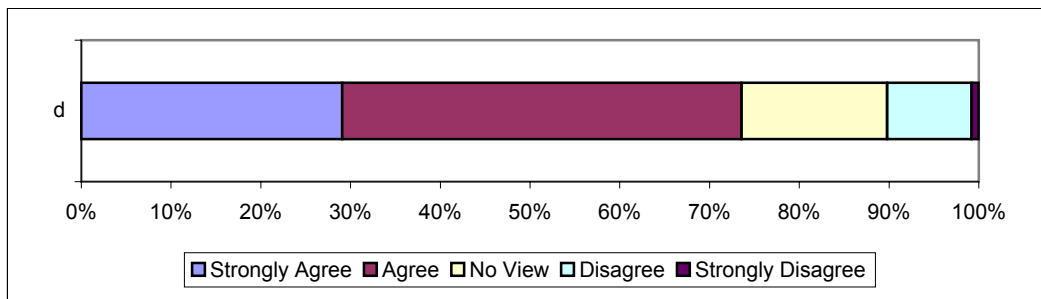
b It is important the development that the development site is easily accessible by public transport



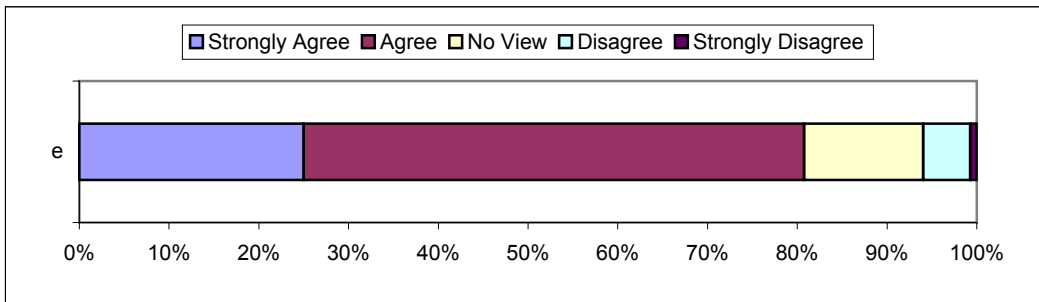
c It is important for people to live near to where they work



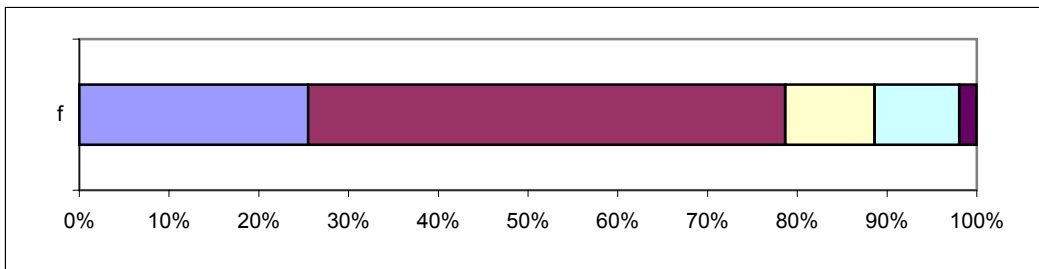
d Breckland should protect existing employment areas from other uses (eg housing/leisure)



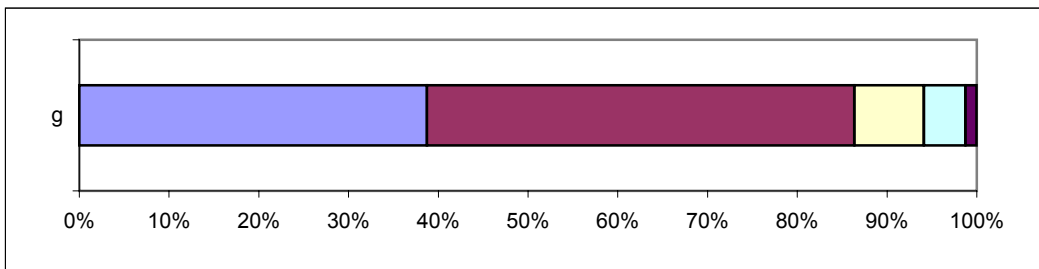
e The Local Plan should let existing firms expand on their existing sites



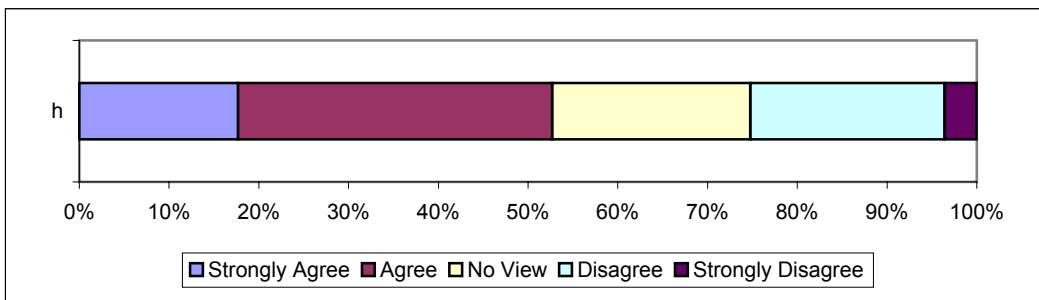
f Identifying small sites in villages for employment uses helps rural economies



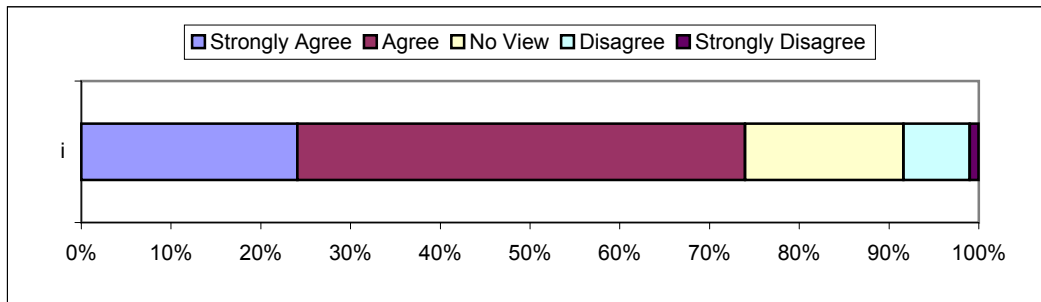
g Breckland should continue to allocate former airfields for employment uses not suitable for towns



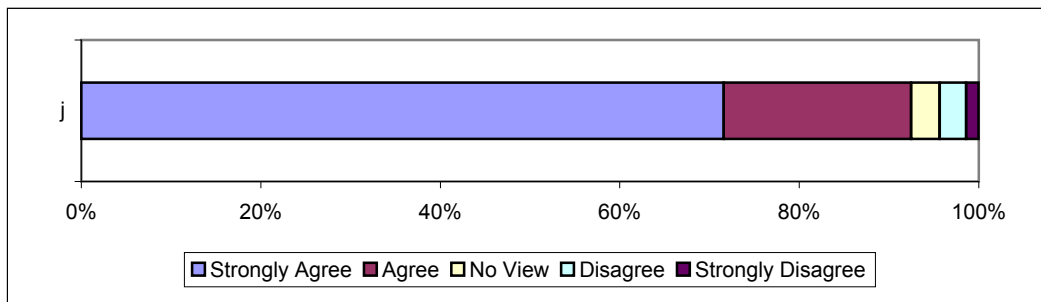
h The Local Plan should try to encourage business uses in redundant farm buildings rather than housing or tourism



i The Local Plan should encourage tourist accommodation in conversions rather than in new buildings



j Chemical plants, open storage, noisy industries and other large industrial processes should not be situated in villages or on the edge of towns



k Other comments

Many comments were supplementary to one or more choices above or qualification of a choice

Environment/wildlife/scenic value/countryside was of general concern

A careful case by case consideration was advocated by a number of comments

Questions about difference between intensive farming and industrial processes

Lots of comments relevant to other topics areas -

- Transport -
  - public transport inadequacies
  - pro cycling comments
  - private transport always required
  - mode integration
  - concern about HGVs on particularly minor roads
- Housing -
  - affordability of housing
  - settlement boundary issues
  - promotion of brownfield development
  - employment/housing balance
- Shopping -
  - more local shops
  - supermarkets

Site/Area specific comments -

Services in Watton are inadequate so little potential for development

Banham Poultry in Attleborough

Dereham town centre

**Q2 When deciding on whether to allow a business to expand at their current site, what issues do you think the Council should consider?**

	No.	%
a	3626	34.8185
b	4135	39.7062
c	1146	11.0044
d	1173	11.2637
e	334	3.20722

**Q3 What types of business should be considered suitable as farm diversification?**

	No.	%
a	2864	21.8426
b	2447	18.6623
c	3969	30.27
d	3504	26.7236
e	328	2.50153

**Q4 What are the issues the Council should consider when allowing development which enables people to operate their business from home?**

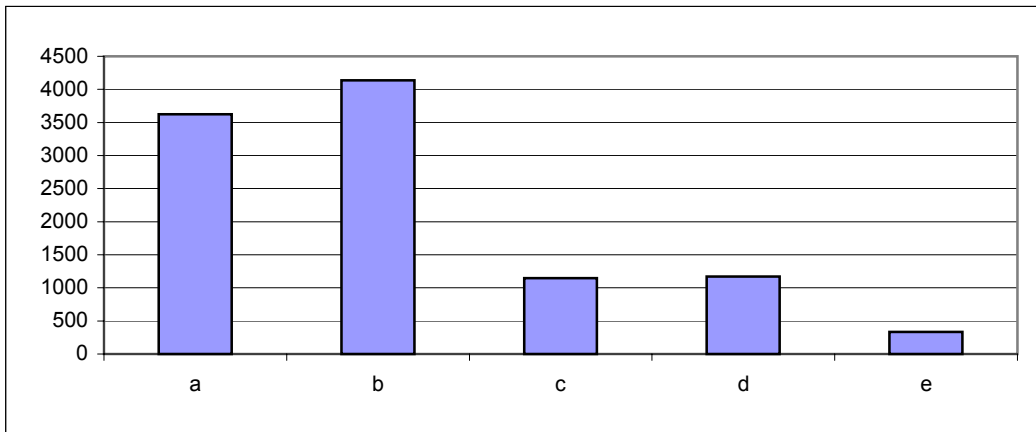
	No.	%
a	4029	38.6772
b	2448	23.5
c	2648	25.42
d	877	8.41893
e	415	3.98387

**Q5 What type of tourist development would be acceptable in rural areas of Breckland?**

	No.	%
a	2197	21.4677
b	2120	20.7153
c	2903	28.3662
d	2535	24.7704
e	479	4.68048

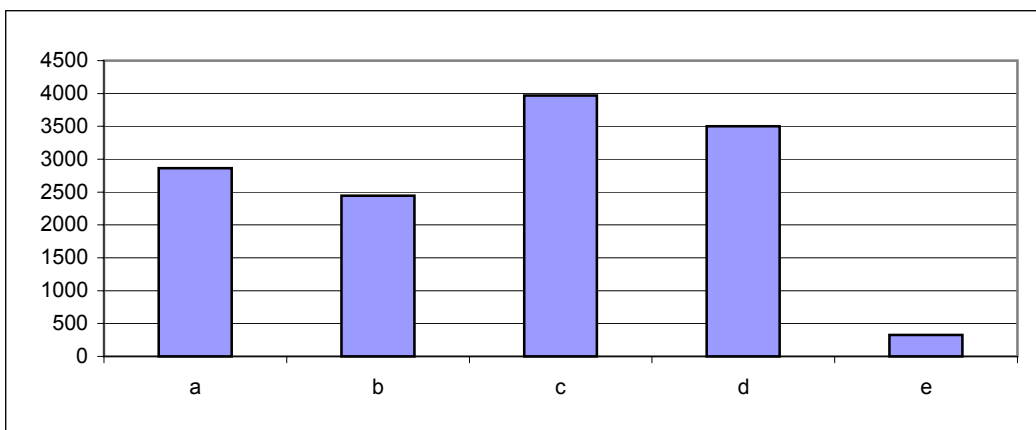
**Q2 When deciding on whether to allow a business to expand at their current site, what issues do you think the Council should consider?**

- a Any likely increase in traffic levels
- b How close it is to residential properties
- c Effects on neighbouring businesses
- d Visual impact
- e Other please state -  
Environmental impact, noise/smell, job creation, public safety, effect on local economy, effect on neighbours, not on greenfield



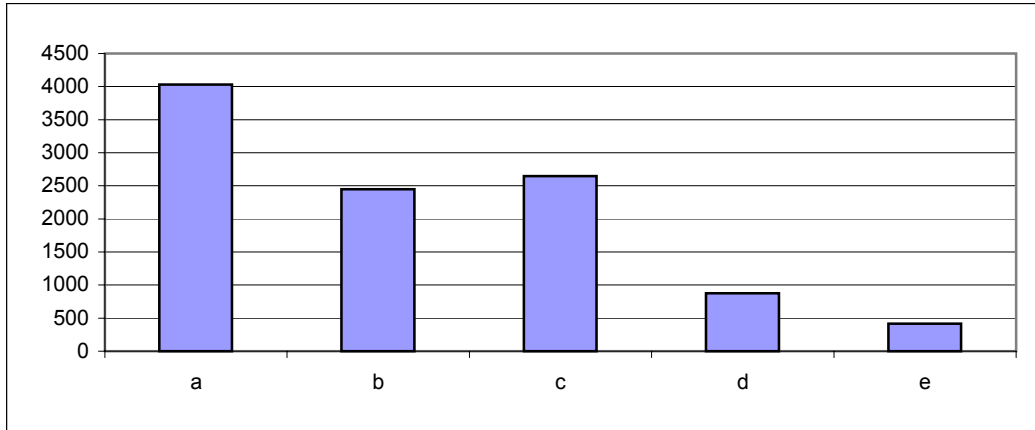
**Q3 What types of business should be considered suitable as farm diversification?**

- a Light Industrial Uses
- b Hi Tech or computer related businesses
- c Craft Workshops/Tea Rooms
- d Tourist Accommodation
- e Other please state -  
Conservation/eco-business/green tourism, leisure activities, equestrian facilities, museum/heritage, renewable energy, storage (of caravans)



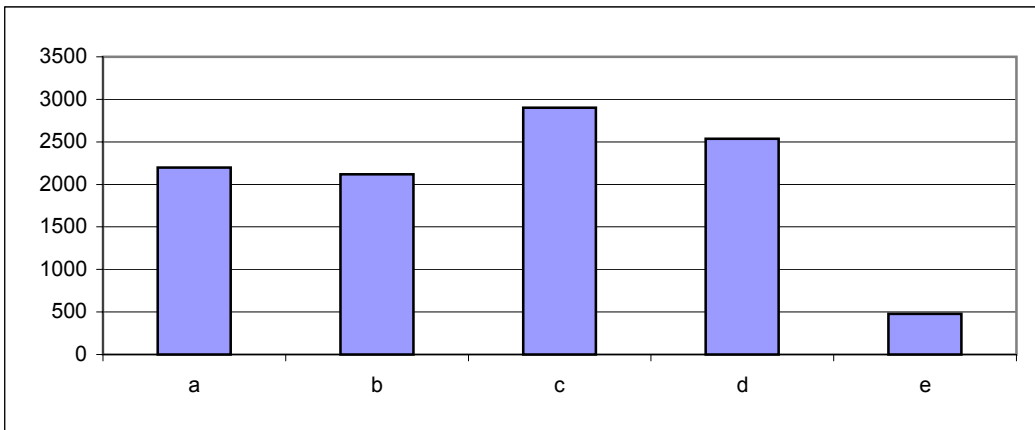
**Q4 What are the issues the Council should consider when allowing development which enables people to operate their business from home?**

- a Vehicle movements
- b Waste
- c Number of visitors to business at home
- d Security measures
- e Other please state -  
Noise/smell, neighbours views/opinions, parking/vehicle access and related issues



**Q5 What type of tourist development would be acceptable in rural areas of Breckland?**

- a Self contained Holiday Villages
- b Equestrian Centres
- c Fishing Lakes
- d Camp Sites/Camping Barns
- e Other please state -  
leisure facilities, walking/cycling/equestrian related, golf courses, nature/green tourism, swimming pools, bird watching/nature study

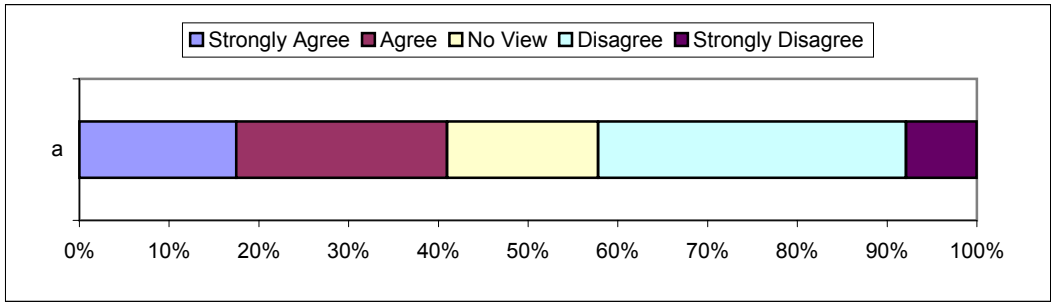


**Q6 The five towns are the main focus for shopping and retail developments. The Council considers a number of issues when deciding whether to allow retail development.**

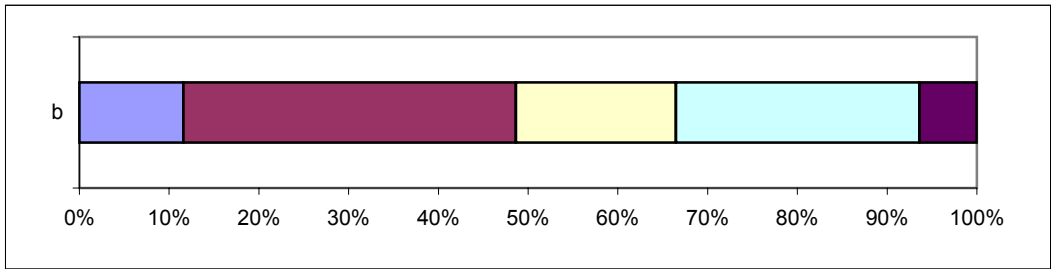
	Strongly Agree		Agree		No View		Disagree		Strongly Disagree		Total
	No.	%	No.	%	No.	%	No.	%	No.	%	
<b>a</b>	883	17.4921	1185	23.4746	851	16.8582	1732	34.3106	397	7.8645	5048
<b>b</b>	584	11.6034	1865	37.0554	897	17.8224	1365	27.121	322	6.39777	5033
<b>c</b>	680	13.476	2238	44.352	1019	20.1942	960	19.025	149	2.95283	5046
<b>d</b>	601	12.1169	2379	47.9637	1293	26.0685	556	11.2097	131	2.64113	4960
<b>e</b>	3520	68.6829	1422	27.7463	117	2.28293	45	0.87805	21	0.40976	5125

**Q6 The five towns are the main focus for shopping and retail developments. The Council considers a number of issues when deciding whether to allow retail development.**

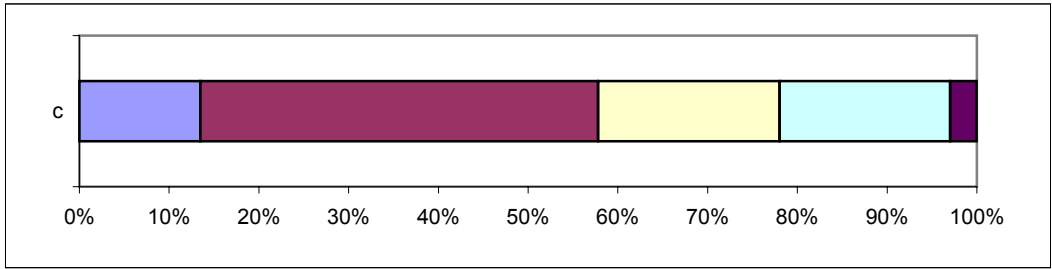
a The Local Plan should try to resist banks and building societies in the prime shopping areas



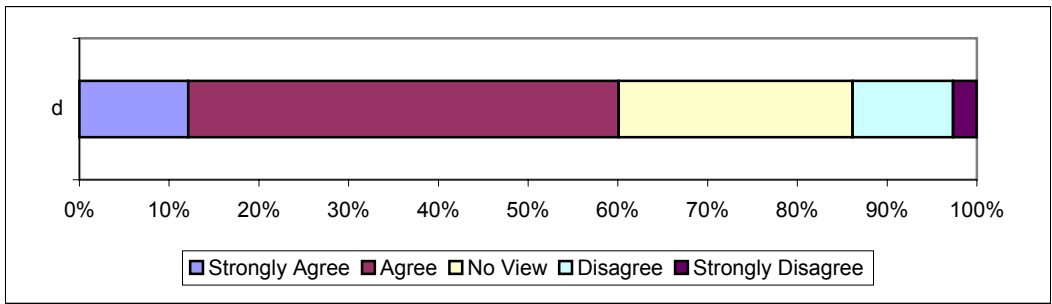
b The Local Plan should encourage more housing in town centres



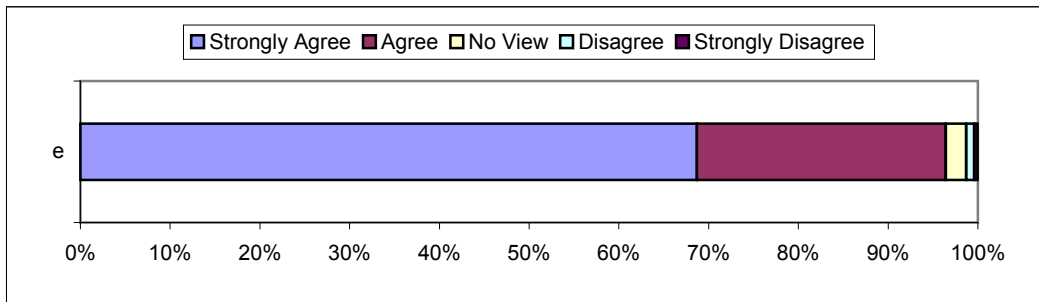
c Certain areas of town centres should be identified for particular uses e.g. bars/cafes or themed shopping



d The Local Plan should encourage “the evening economy”

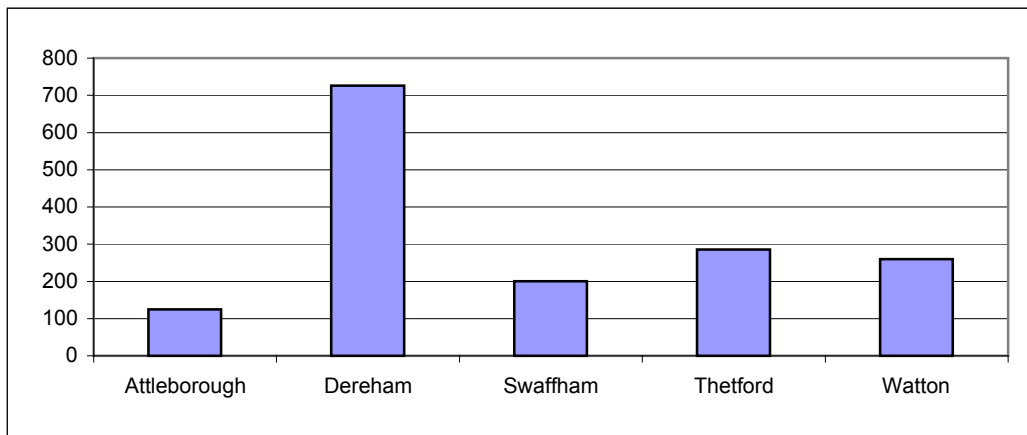


e The Local Plan should contain a policy that tries to resist the loss of a village pub or shop



**Q7 Are there areas in the centre of the market towns that may benefit from being identified for redevelopment, regeneration or enhancement? If so where?**

Attleborough	125
Dereham	726
Swaffham	200
Thetford	286
Watton	260

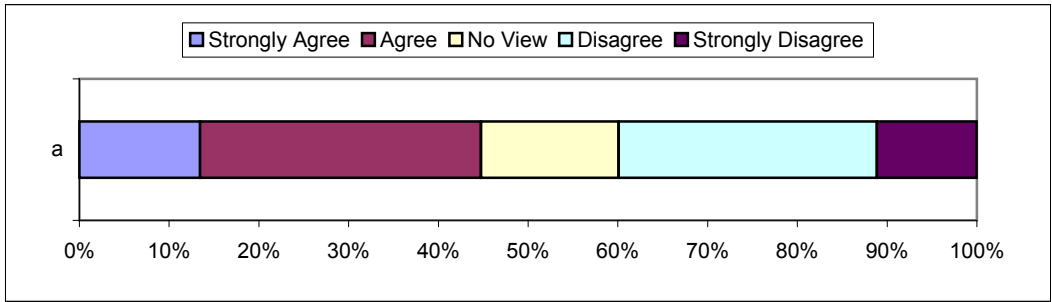


**Q8 Breckland Council is committed to protecting the local environment whilst allowing suitable development to take place.**

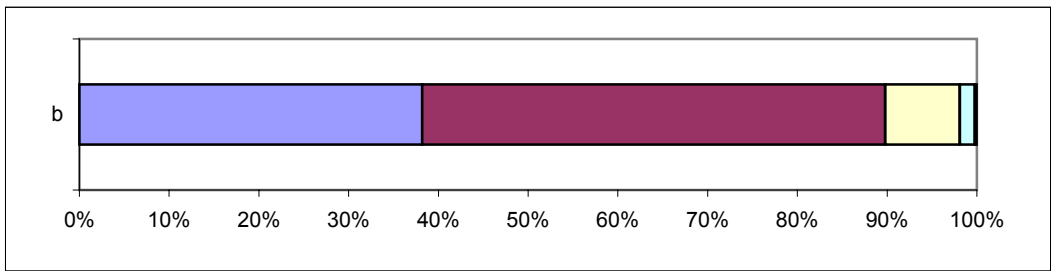
	Strongly Agree		Agree		No View		Disagree		Strongly Disagree		Total
	No.	%	No.	%	No.	%	No.	%	No.	%	
<b>a</b>	674	13.429	1572	31.321	770	15.3417	1444	28.7707	559	11.1377	5019
<b>b</b>	1935	38.2109	2613	51.5995	420	8.29384	85	1.67852	11	0.21722	5064
<b>c</b>	1171	23.7189	2498	50.5975	1030	20.8629	191	3.86875	47	0.952	4937

**Q8 Breckland Council is committed to protecting the local environment whilst allowing suitable development to take place.**

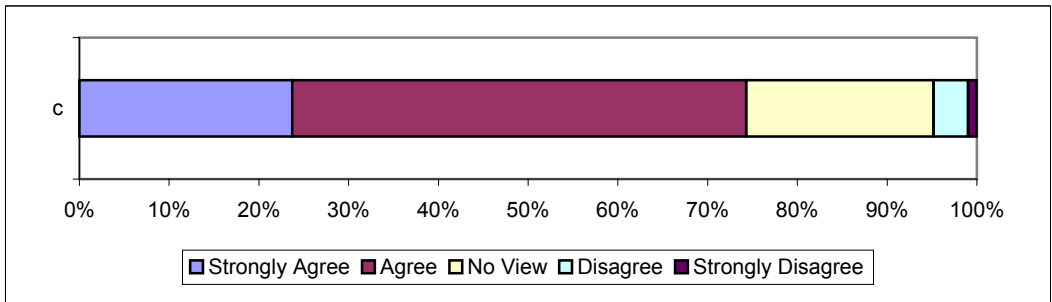
a The Local Plan should encourage new and innovative design for new development in historic areas



b The Local Plan should contain a policy on water conservation



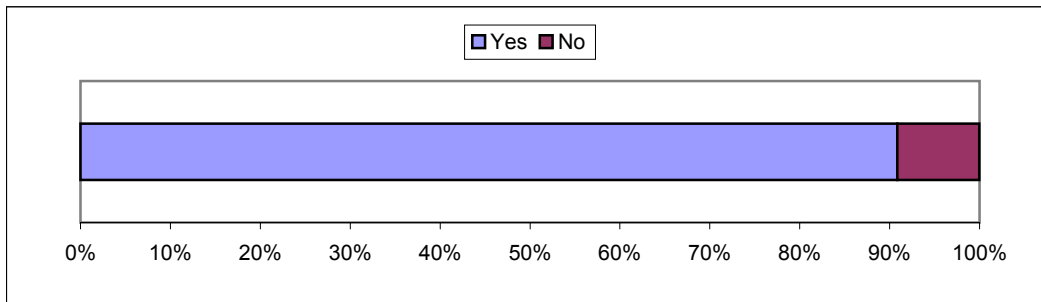
c The Local Plan should contain a policy promoting sustainable construction



**Q9 Should Breckland encourage more renewable energy schemes?**

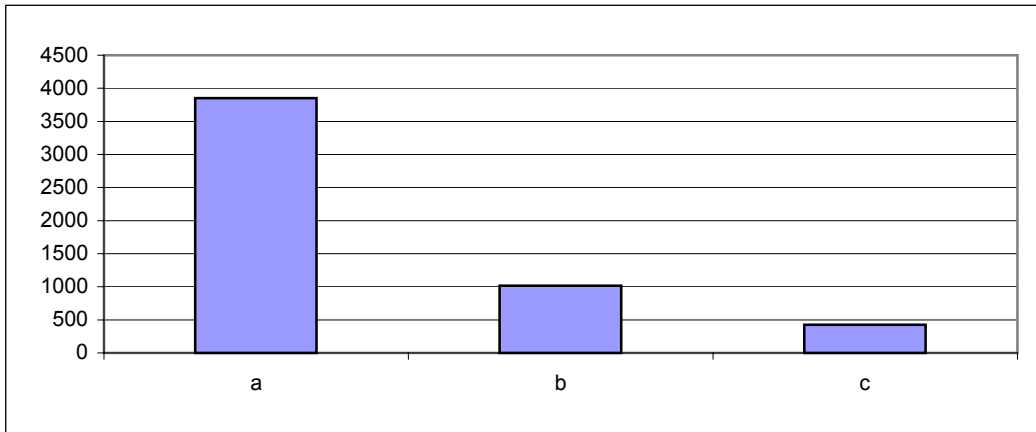
	No.	%
Yes	4726	90.85%
No	476	9.15%
<b>Types</b>		
	No.	%
a	3852	72.7479
b	1017	19.2068
c	426	8.04533
<b>Where</b>		
	No.	%
a	2763	37.4086
b	2650	35.8787
c	1276	17.2759
d	697	9.43677

**Q9 Should Breckland encourage more renewable energy schemes?**



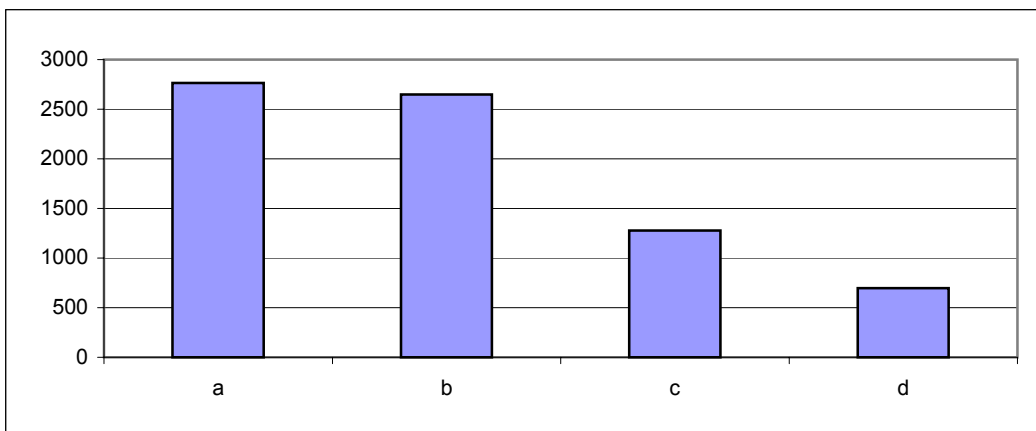
**Types of renewable energy**

- a Wind turbines
- b Woodchip power sources
- c Other please state -  
Solar, Energy from waste, Hydro-electric



**Where**

- a Open countryside
- b Edge of towns
- c Edge of villages
- d Other please state -  
Airfields, Coastal, Offshore, Brownfield, areas of best resource



**Q10 If the Council considers a proposal for a renewable energy scheme (such as a wind turbine) what matters should it take into account?**

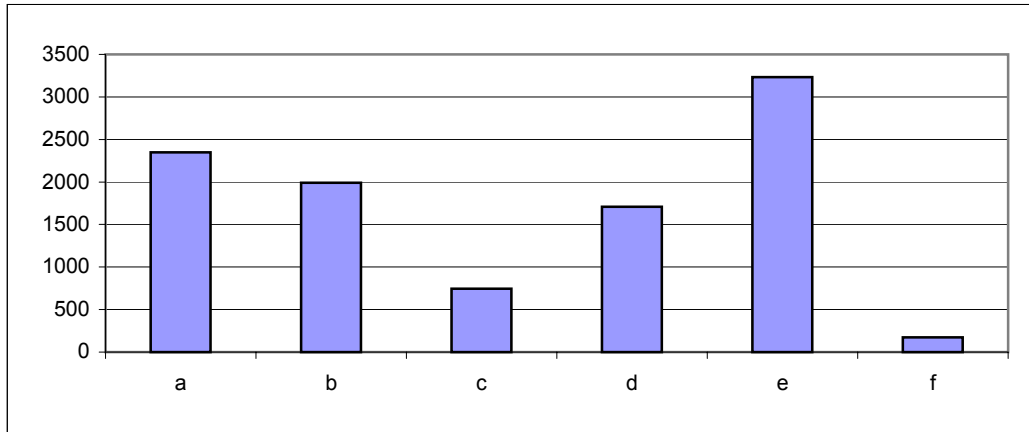
	No.	%
a	2348	23.0151
b	1992	19.5256
c	746	7.31229
d	1710	16.7614
e	3233	31.6899
f	173	1.69575

**Q11 From a transport view, what can be the Local Plan do to try to tackle the problems of access to some**

	No.	%
a	1324	13.1141
b	922	9.13233
c	4021	39.8277
d	3451	34.1819
e	378	3.74406

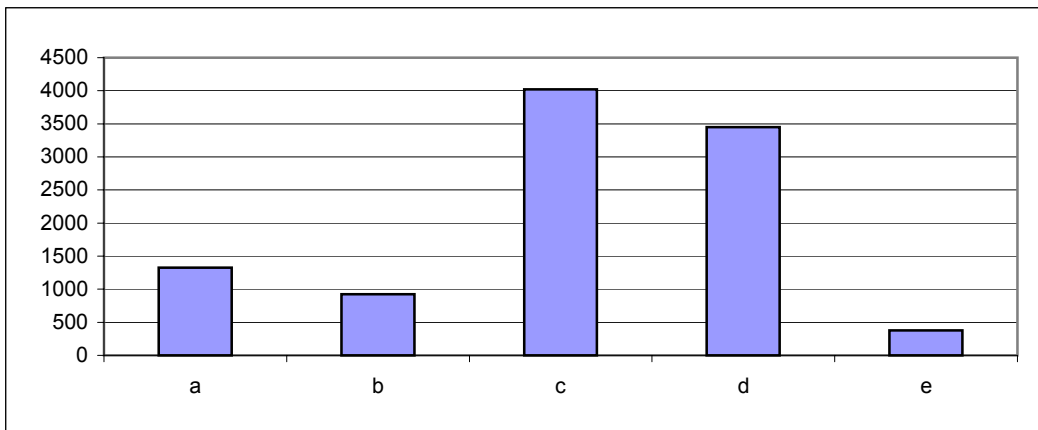
**Q10 If the Council considers a proposal for a renewable energy scheme (such as a wind turbine) what matters should it take into account?**

- a Visual Impact
- b Effect on countryside conservation
- c Traffic Generation
- d Noise/Smell
- e Long term benefits to the environment
- f Other please state -  
Effect on housing, energy efficiency, economic viability, wildlife, site restoration



**Q11 From a transport view, what can be the Local Plan do to try to tackle the problems of access to some**

- a Provide more cycle-ways
- b More pedestrian routes
- c Support for community transport initiatives, buses, trains etc
- d Lobby Central Government for more funding for local transport
- e Other please state -  
public transport timetables/information, better roads, carshare schemes, car access/parking, park & ride, dualling major roads, charging for parking, improve user friendliness of public transport, promote alternative fuelled vehicles, speed limits (lower) in villages, by-passes



**Q12 What should be the main transport priorities for Breckland?**

	No.	%
<b>a</b>	726	7.07327
<b>b</b>	948	9.23617
<b>c</b>	3898	37.9774
<b>d</b>	2139	20.8398
<b>e</b>	2323	22.6325
<b>f</b>	230	2.24084

**Q12 What should be the main transport priorities for Breckland?**

a Walking

b Cycling

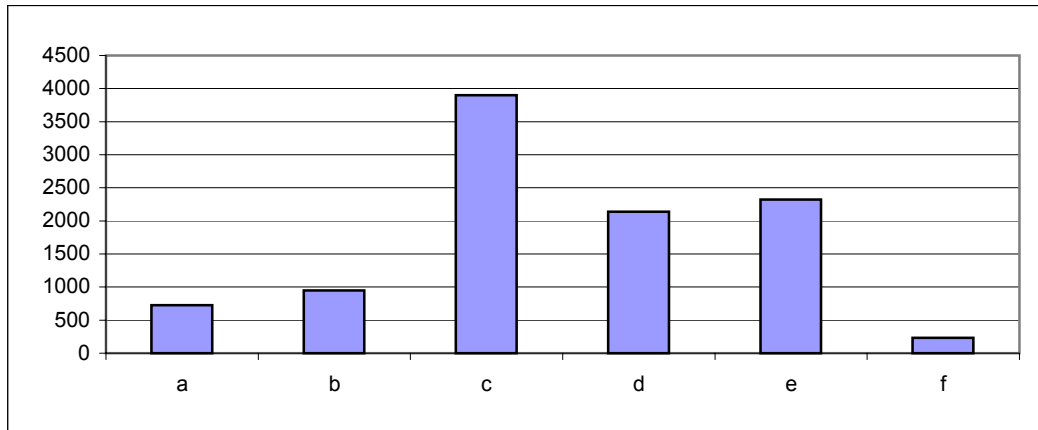
c Public transport

d Community transport

e Car parking

f Other please state -

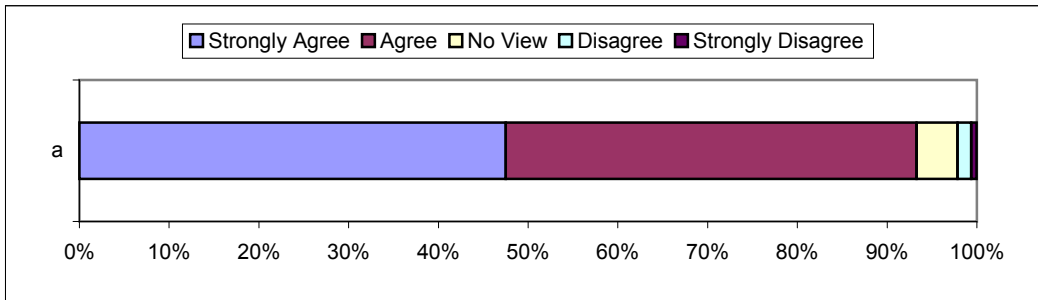
Highway maintenance, park & ride, improve main roads, improve all roads, others similar to 11 e above



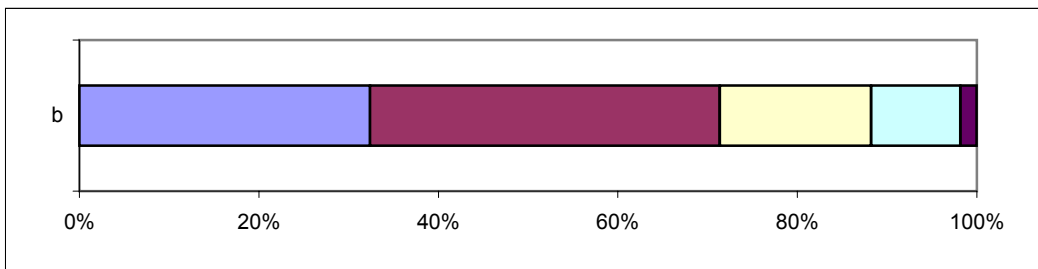
<b>Q13 Breckland Council can put provisions in new developments for improvements to public transport.</b>											
	<b>Strongly Agree</b>		<b>Agree</b>		<b>No View</b>		<b>Disagree</b>		<b>Strongly Disagree</b>		<b>Total</b>
	<b>No.</b>	<b>%</b>	<b>No.</b>	<b>%</b>	<b>No.</b>	<b>%</b>	<b>No.</b>	<b>%</b>	<b>No.</b>	<b>%</b>	
<b>a</b>	2401	47.5069	2314	45.7855	231	4.57064	78	1.54333	30	0.59359	5054
<b>b</b>	1633	32.3815	1965	38.9649	852	16.8947	502	9.95439	91	1.80448	5043
<b>c</b>	1469	29.5098	2623	52.6918	678	13.6199	175	3.51547	33	0.66292	4978
<b>d</b>	223	4.50596	565	11.4164	788	15.9224	2416	48.8179	957	19.3372	4949
<b>e</b>	583	11.7588	1282	25.8572	778	15.6918	1553	31.3231	762	15.3691	4958

**Q13 Breckland Council can put provisions in new developments for improvements to public transport.**

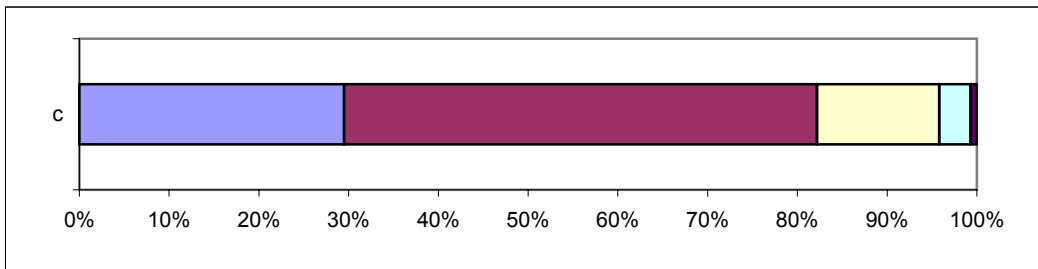
a Improvements to public transport should be sought as part of new developments



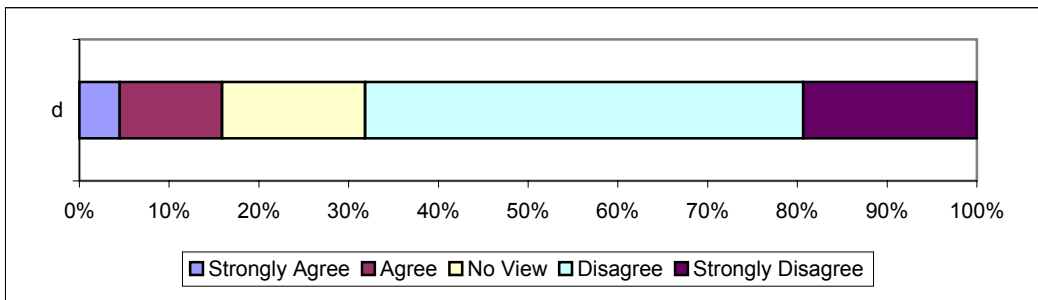
b Any improvements to public transport required by new developments should be paid for by the developer



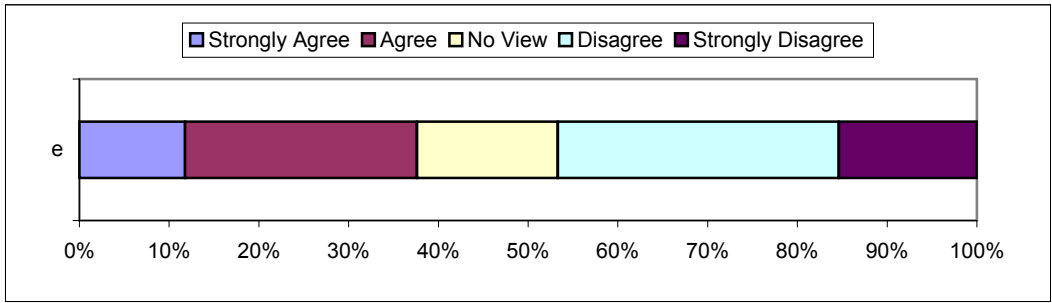
c The Local Plan should include give more priority to pedestrian friendly measures



d The amount of car parking in new developments should be reduced



e Some new developments should be “car free”

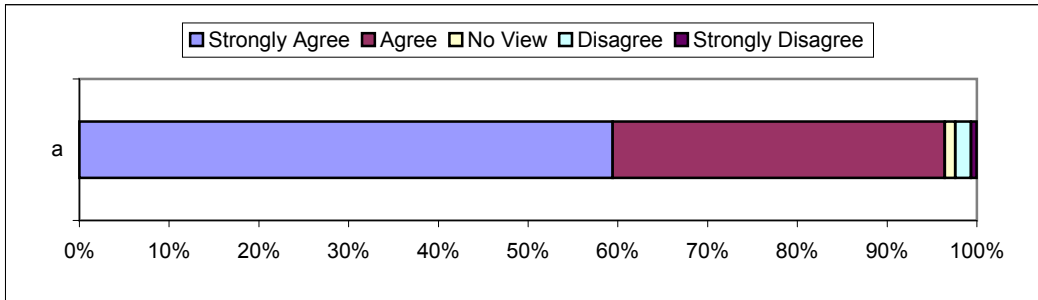


**Q14 The Council could specify that some housing developments would have reduced or limited spaces for parking cars**

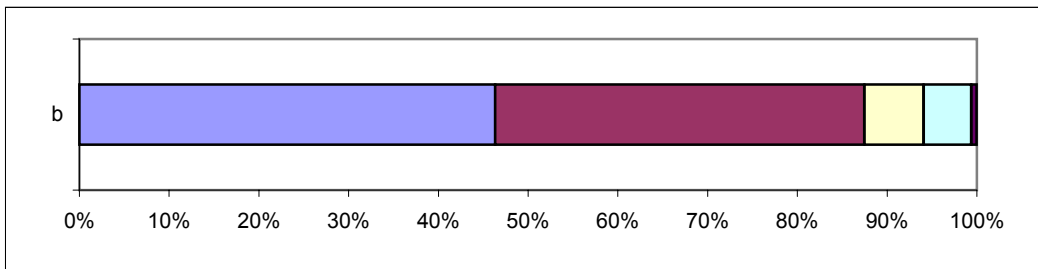
	Strongly Agree		Agree		No View		Disagree		Strongly Disagree		Total
	No.	%	No.	%	No.	%	No.	%	No.	%	
<b>a</b>	3022	59.4297	1881	36.9912	60	1.17994	90	1.76991	32	0.6293	5085
<b>b</b>	2312	46.342	2053	41.1505	328	6.57446	266	5.33173	30	0.60132	4989
<b>c</b>	2571	50.8103	2073	40.9684	241	4.76285	164	3.24111	11	0.21739	5060
<b>d</b>	898	18.1561	1625	32.8548	853	17.2463	1230	24.8686	340	6.87424	4946
<b>e</b>	645	13.0514	1747	35.3501	1044	21.1251	1201	24.3019	305	6.17159	4942
<b>f</b>	480	13.2597	1479	40.8564	757	20.9116	480	13.2597	424	11.7127	3620
<b>g</b>	908	18.3955	2235	45.2796	706	14.3031	895	18.1321	192	3.88979	4936

**Q14 The Council could specify that some housing developments would have reduced or limited spaces for parking cars**

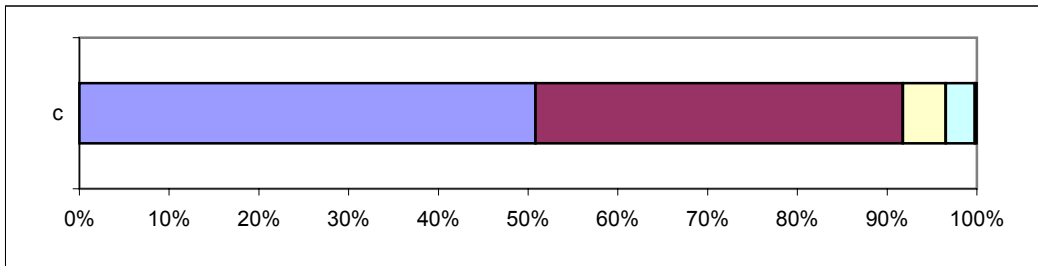
a Reduced parking spaces would lead to more on street parking



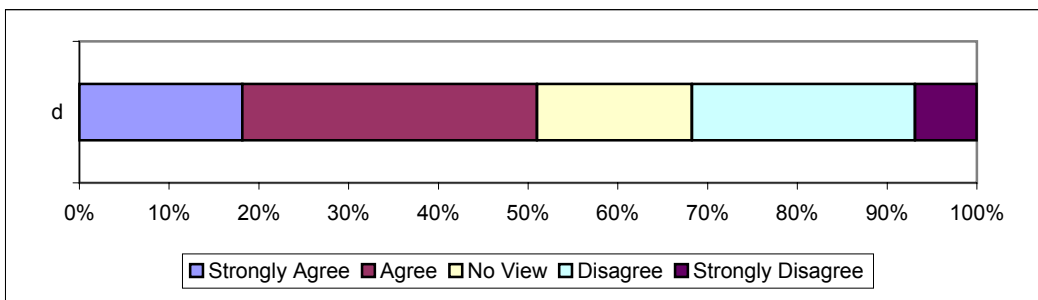
b There would be an increase in traffic congestion



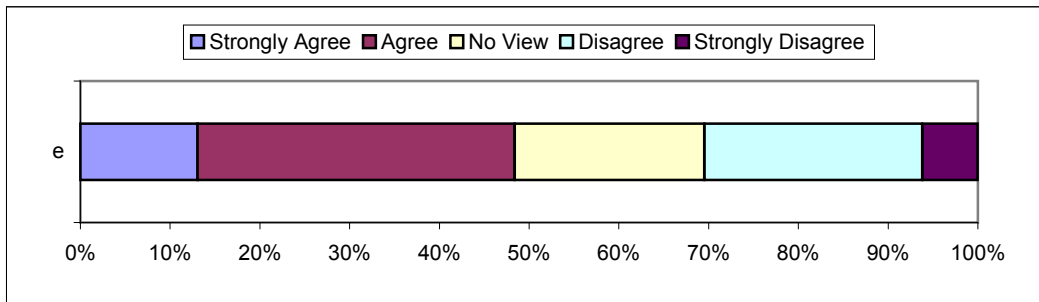
c It would increase the fear of car crime if the car was not parked near to the home



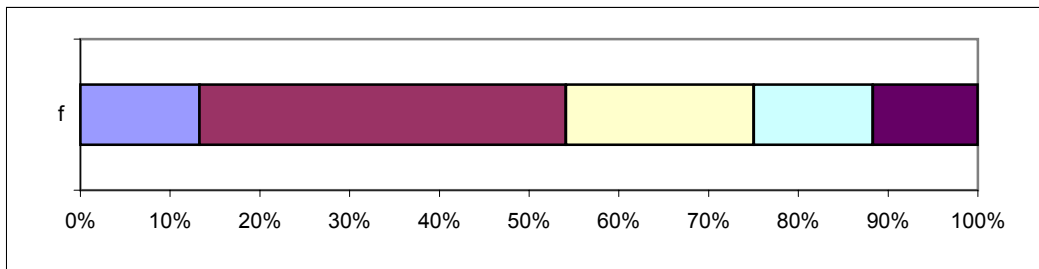
d Less parked cars may lead to less car crime



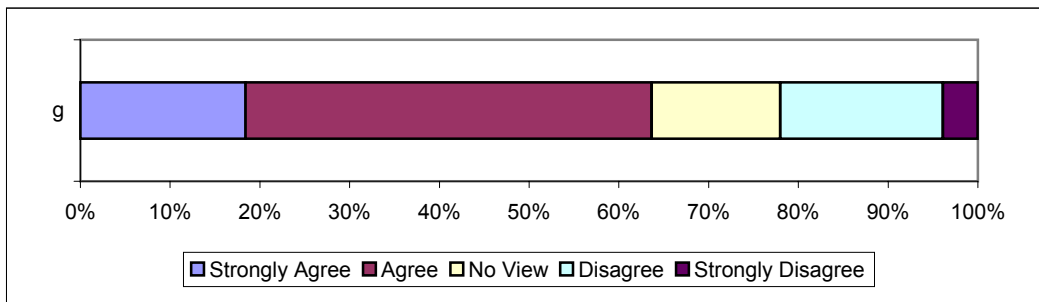
e Less cars would enable the development to be more attractive to look at.



f It may encourage people to share journeys to work



g Less cars may lead to better road safety for pedestrians



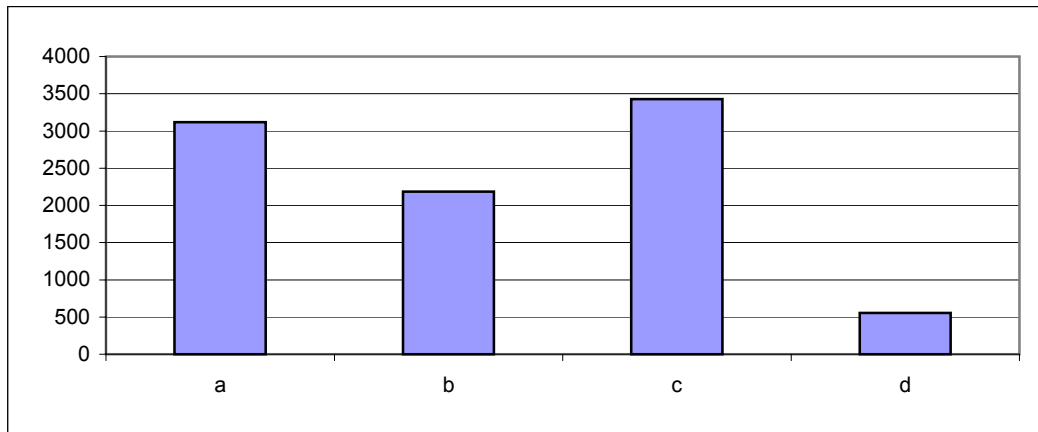
h Other comments -  
People will own cars and reduced parking will not change this  
reduced parking will cause more problems

**Q15 What measures could the Local Plan include to improve access to transport/travel arrangements for the disabled?**

	<b>No.</b>	<b>%</b>
<b>a</b>	3118	33.5774
<b>b</b>	2184	23.5193
<b>c</b>	3430	36.9373
<b>d</b>	554	5.96597

**Q15 What measures could the Local Plan include to improve access to transport/travel arrangements for the disabled?**

- a Improved locations for bus stops
- b More bus shelters
- c Wider pavements/more pedestrian areas
- d Other please state -  
Disabled parking/facilities, seating especially at bus stops, better buses (newer, space for bikes/wheel chairs)

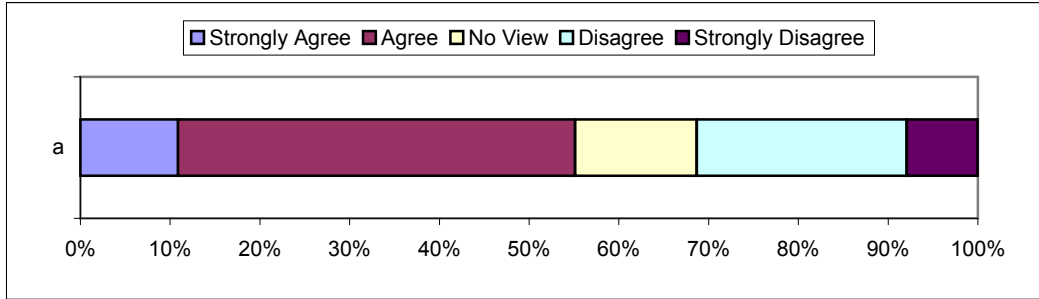


**Q16 As our population grows, Breckland Council must identify where housing development will take place over the next ten years. Please say whether you agree or disagree with the following statements.**

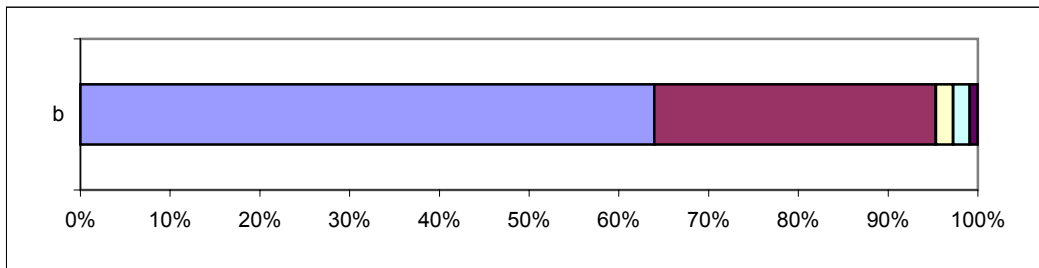
	Strongly Agree		Agree		No View		Disagree		Strongly Disagree		Total
	No.	%	No.	%	No.	%	No.	%	No.	%	
<b>a</b>	535	10.8718	2179	44.2796	666	13.5338	1152	23.4099	389	7.9049	4921
<b>b</b>	3268	63.928	1605	31.3967	98	1.91706	96	1.87793	45	0.88028	5112
<b>c</b>	420	8.37321	1271	25.3389	929	18.5207	1954	38.9553	442	8.8118	5016
<b>d</b>	306	6.14211	1176	23.605	1897	38.0771	1208	24.2473	395	7.92854	4982
<b>e</b>	1819	36.1918	2102	41.8225	881	17.5288	168	3.34262	56	1.11421	5026
<b>f</b>	2329	45.0832	2332	45.1413	297	5.74913	181	3.50368	27	0.52265	5166
<b>g</b>	2409	47.3095	2361	46.3668	249	4.89002	60	1.17832	13	0.2553	5092
<b>h</b>	3096	60.7178	1604	31.4571	236	4.62836	112	2.19651	51	1.0002	5099

**Q16 As our population grows, Breckland Council must identify where housing development will take place over the next ten years. Please say whether you agree or disagree with the following statements.**

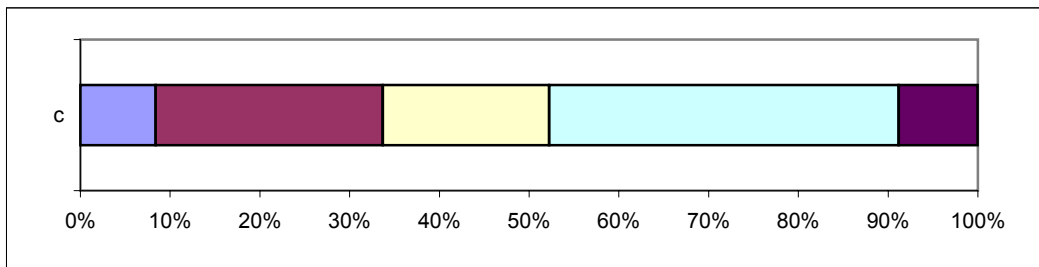
a Breckland should consider identifying some of its larger villages for new development



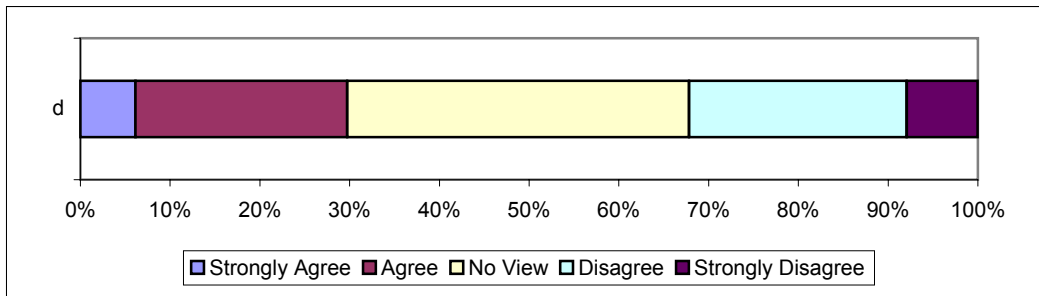
b Breckland should encourage the redevelopment of previously developed sites before allocating greenfield land for new housing



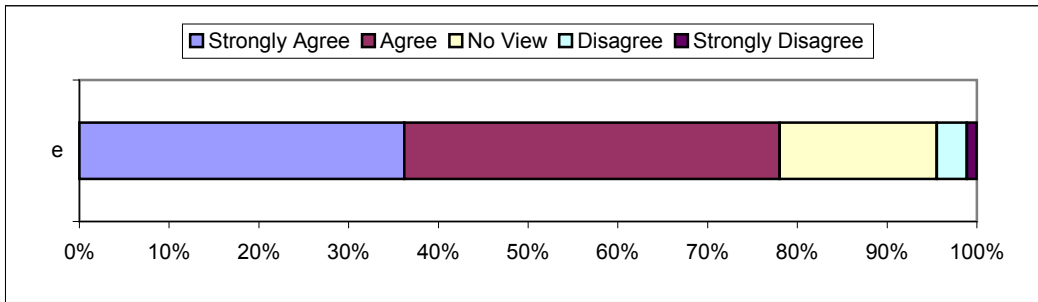
c The Local Plan should encourage higher density housing in some areas



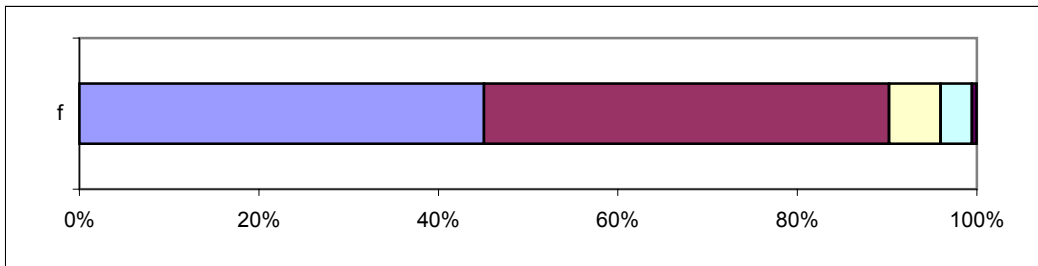
d The Local Plan should contain a policy encouraging system built or pre-constructed homes



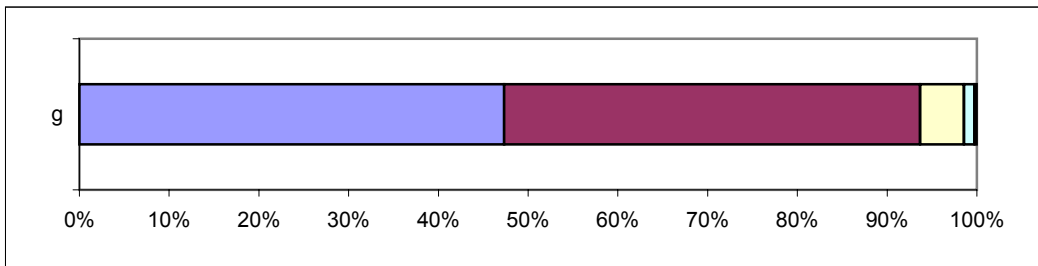
e Breckland Council should insist on 6 acres of open space per 1,000 population as a minimum in new housing developments



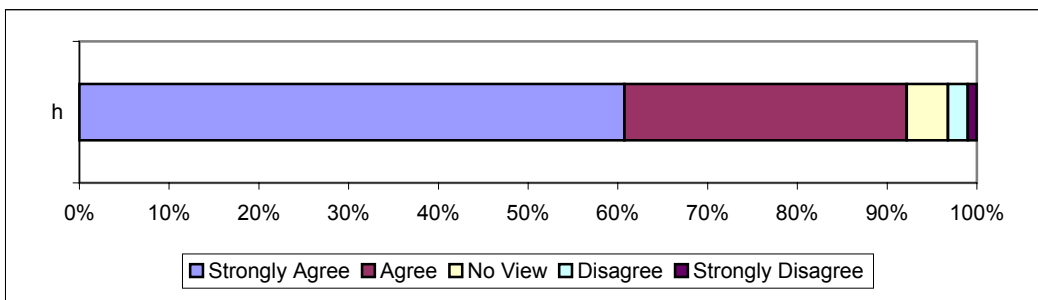
f All new housing developments should include areas of open space irrespective of the size of the development



g The Local Plan should identify areas for public parks



h Developers of new sites that are likely to have an impact on existing services/facilities should be expected to make financial contributions towards new or improved facilities



**Q17 Which facilities might developers be expected to contribute to financially?**

	No.	%
a	2630	25.8071
b	1415	13.8848
c	2757	27.0533
d	1045	10.2541
e	1918	18.8205
f	426	4.18016

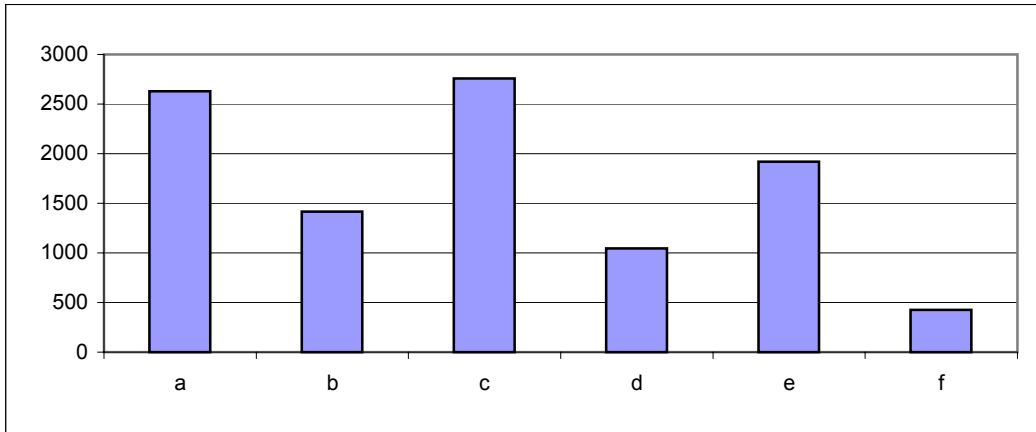
**Q18 Are there any locations in Breckland that would be unsuitable for telephone masts?**

	No.	%
a	2750	26.738
b	2523	24.5309
c	1691	16.4414
d	2629	25.5615
e	429	4.17112
f	263	2.55712

**Q17 Which facilities might developers be expected to contribute to financially?**

- a Schools
- b Shops
- c Health Facilities
- d Cycle Paths
- e Play Areas
- f Other please state -

Community facilities, religious facilities, open space, leisure facilities, libraries, roads/traffic measures, maintenance, recycling facilities, affordable housing, communications (ICT, Broadband internet), Emergency services, conservation areas, security



**Q18 Are there any locations in Breckland that would be unsuitable for telephone masts?**

- a Areas of Important Landscape Quality
- b Nature Conservation Sites
- c Town Centres
- d Schools
- e Public
- f Other please state -

residential areas/housing, historic buildings & churches, countryside/rural areas, public areas (open space, play areas etc), visually sensitive areas

